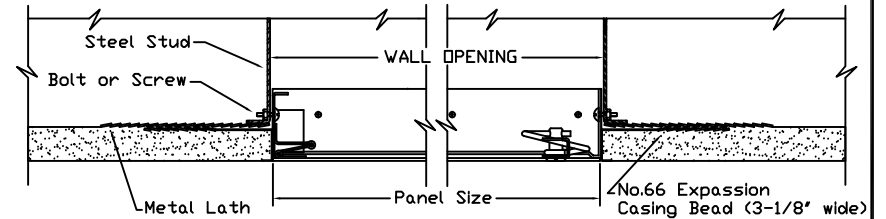
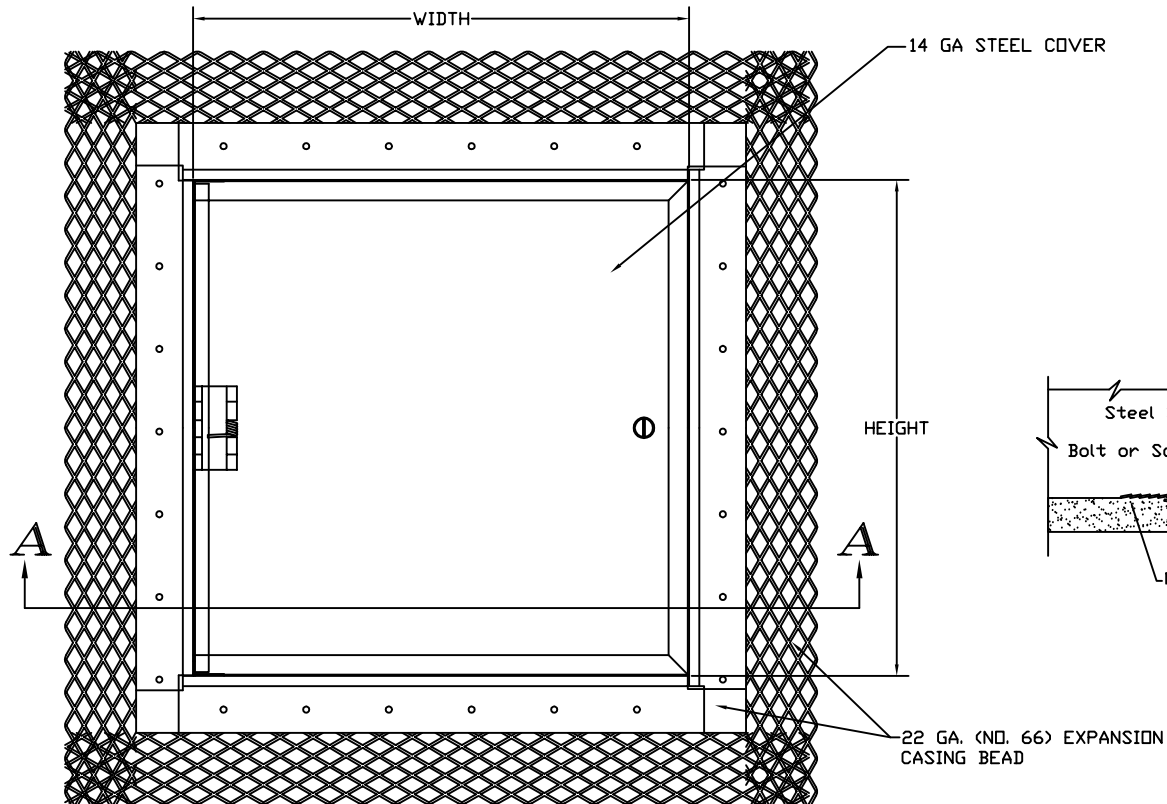


NOTE: FINISH: ONE COAT BAKED ON ENAMEL
POWDER COATED FINISH


* CAM LOCK (CENTERED) AT TOP AND BOTTOM OF PANEL;
BALANCE OF CAM LOCKS ON SIDE OPPOSITE HINGES

STANDARD SIZES and PRODUCT NUMBERS

DOOR SIZE	WALL OPENING	PRODUCT NO. STYLE K	No. OF CAMS	No. OF HINGES
8 x 8	8 1/4 x 8 1/4	3200-010	1	1
8 x 12	8 1/4 x 12 1/4	3200-012	1	1
12 x 12	12 1/4 x 12 1/4	3200-014	1	1
12 x 16	12 1/4 x 16 1/4	3200-016	1	2
12 x 18	12 1/4 x 18 1/4	3200-018	1	2
12 x 24	12 1/4 x 24 1/4	3200-019	2	2
16 x 16	16 1/4 x 16 1/4	3200-020	1	2
16 x 20	16 1/4 x 20 1/4	3200-022	1	2
18 x 18	18 1/4 x 18 1/4	3200-024	1	2
20 x 24	20 1/4 x 24 1/4	3200-026	4 *	2
20 x 30	20 1/4 x 30 1/4	3200-028	5 *	3
24 x 24	24 1/4 x 24 1/4	3200-030	4 *	2
24 x 30	24 1/4 x 30 1/4	3200-032	5 *	3
24 x 36	24 1/4 x 36 1/4	3200-034	5 *	3



Installation Detail

K ACCESS DOOR			
MATERIAL SCHEDULE			
QUANTITY	SIZE	COVER	FRAME
			
		Phone: 1-800-609-2917 Fax: 1-888-626-2907 Email: info@accessdoorsandpanels.com www.AccessDoorsAndPanels.com	
STANDARD FLUSH DOOR for PLASTER WALLS or CEILING			
DEALER			
PROJECT			
LOCATION			
ARCH.			
CONT'D			
DATE		DRAWN	
REV		JOB NO.	
NR13\MILCOR\KACCESS		SHEET	

