

FW-5015

Fire Rated Access Door,
Recessed for Drywall walls

Application

- For installation in drywall walls requiring concealing of the door panel consistent to surroundings
- For use in walls, fire-rated for up to 90-minutes with a temperature rise of max 250° C (450°F) over 30 minutes

Product Features

- Recessed reinforced insulated door fitted with 5/8" Fire-rated drywall.
- Concealed hinge & self-centering device ensures seamless appearance in walls
- Self-closing & self-latching door mechanism
- Perforated Frame ensures trouble-free application of skim coat to edge of the door
- Zinc coated steel provides superior corrosion resistance
- Testing standards UL 10(b) and ULC S104

FW-5015 Access Door Specifications:

Door: Steel-22 Gauge recessed fitted with 5/8" thick drywall suitable to accept skim coat finish on site.

Door Frame: Steel-22 Gauge press bent for strength and rigidity with pre-punched flanges for convenient mounting and accepting skim coat finish on site

Hinge: Concealed

Fire Rating (Walls): Meets 1½ hour fire rating requirement in accordance with UL 10(b) and CAN/ULC S104-10 for max size upto 24" x 36"

Latch: Self-latching bolt, operated by flush key

Finish: Satin coat steel

FW-5015 STANDARD SIZES

(other sizes available upon request)

Nominal Door Size W&H		Latches	Weight per Door	
Inches	mm		lbs.	kg.
12 X 12	305 X 305	1	10	4.5
16 x 16	406 X 406	1	14	6.4
18 X 18	457 x 457	1	18	8.2
24 X 24	610 x 610	1	29	13.1
24 X 36	610 X 914	2	42	19.0

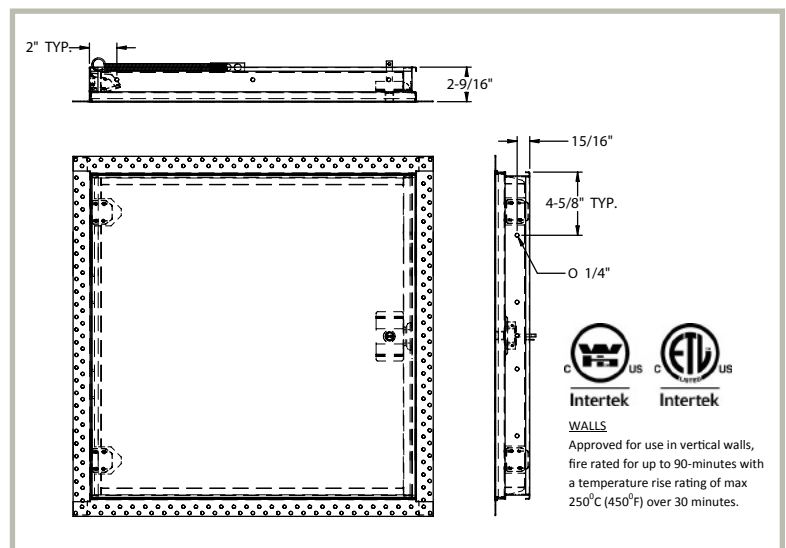
Wall opening is W + 3/8" (9 mm)

For detailed specifications see submittal sheet

PATENT PENDING



PATENT PENDING





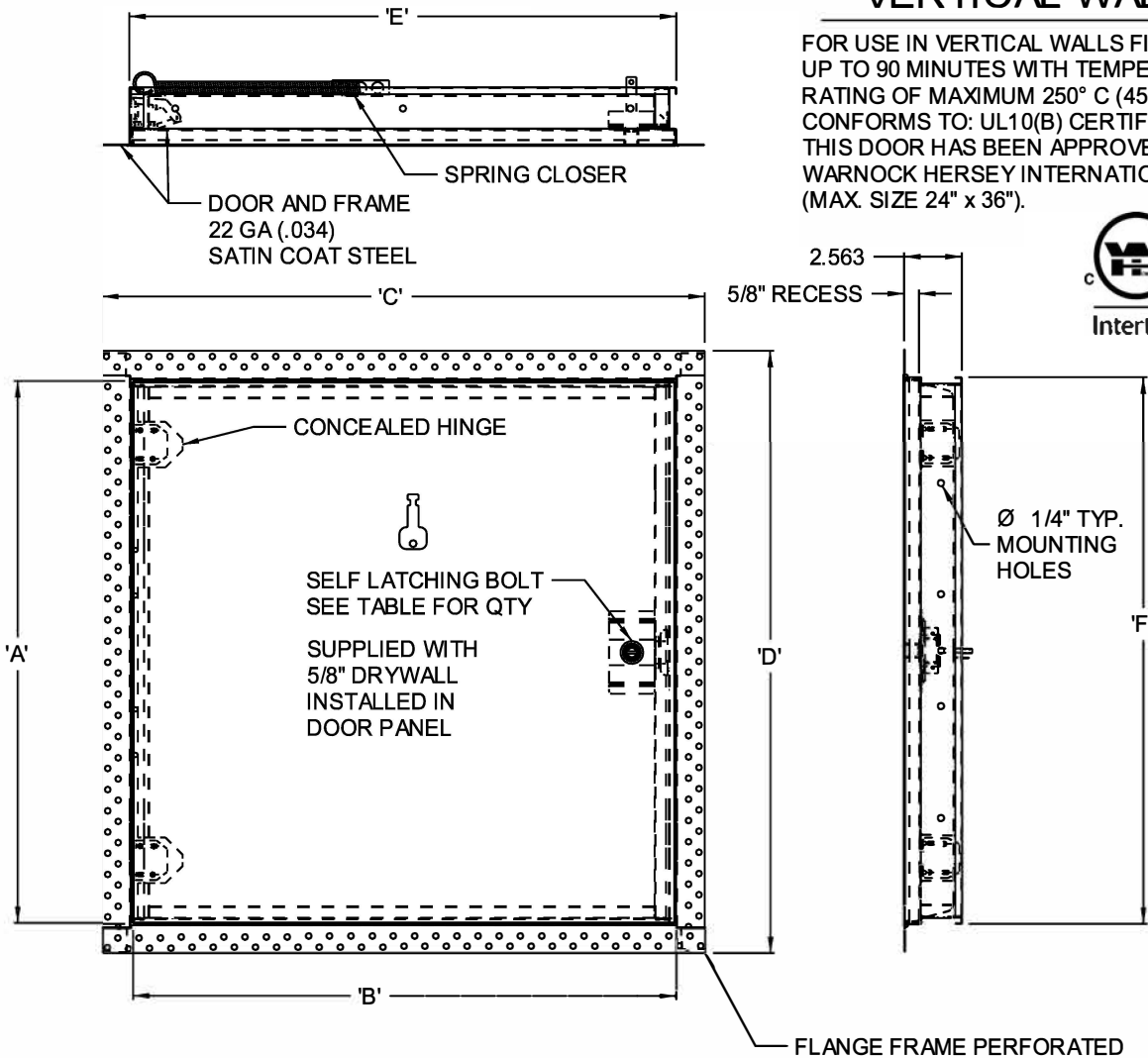
FW-5015

RECESSED FOR DRYWALL

QTY.	NOMINAL SIZE	A	B	C	D	E	F	LATCH QTY
	12 x 12 (305 x 305)	11.83 (300)	11.89 (302)	14.48 (368)	14.48 (368)	12.04 (306)	12.04 (306)	1
	14 x 14 (356 x 356)	13.83 (351)	13.89 (353)	16.48 (419)	16.48 (419)	14.04 (357)	14.04 (357)	1
	16 x 16 (406 x 406)	15.83 (402)	15.89 (404)	18.48 (469)	18.48 (469)	16.04 (407)	16.04 (407)	1
	18 x 18 (457 x 457)	17.83 (453)	17.89 (454)	20.48 (520)	20.48 (520)	18.04 (458)	18.04 (458)	1
	22 x 30 (560 x 762)	29.83 (758)	21.89 (556)	24.48 (571)	32.48 (825)	22.04 (560)	30.04 (763)	2
	22 x 36 (580 x 914)	35.83 (910)	21.89 (556)	24.48 (571)	38.48 (977)	22.04 (560)	36.04 (915)	2
	24 x 24 (610 x 610)	23.83 (605)	23.89 (607)	26.48 (673)	26.48 (673)	24.04 (611)	24.04 (611)	1
	24 x 36 (610 x 914)	35.83 (910)	23.89 (607)	26.48 (673)	38.48 (977)	24.04 (611)	36.04 (915)	2

VERTICAL WALLS

FOR USE IN VERTICAL WALLS FIRE RATED FOR UP TO 90 MINUTES WITH TEMPERATURE RISE RATING OF MAXIMUM 250° C (450° F) OVER 30 MINUTES. CONFORMS TO: UL10(B) CERTIFIED TO: CANULC S104 THIS DOOR HAS BEEN APPROVED BY WARNOCK HERSEY INTERNATIONAL (MAX. SIZE 24" x 36").



STANDARD FEATURES:

UNIVERSAL SELF LATCHING BOLT- OPERATED BY FLUSH KEY, WITH INSIDE TURN RELEASE.

OPTIONS:

SATIN COAT STEEL, MILL FINISH

LOCK TYPE

RIM CYLINDER LOCK

FIRE RATED SPECIAL SIZES:

SPECIAL SIZES CAN BE ORDERED, BUT BASIC CONSTRUCTION MUST REMAIN CONSTANT TO COMPLY WITH WARNOCK HERSEY INTERNATIONAL REGULATIONS.

JOB NAME:

APPROVED BY:

CUSTOMER:

DATE: