



JL INDUSTRIES

SUBMITTAL/TECHNICAL DATA SHEET

DESCRIPTIONS

JL fire rated floor doors are designed to control the transmission of heat and flames when installed in a floor-ceiling assembly with a maximum temperature rise of 250°F (139°C) at 60 minutes.

SPECIFICATIONS

EXTERIOR FRAME MATERIAL: 12 ga (2.75 mm) galvanized steel, supplied with stainless steel anchor straps.

DOOR PANEL MATERIAL: 3/16" (4.78 mm) steel diamond plate exterior with 12 ga galvanized steel stiffener channels.

DOOR LINER MATERIAL: 14 ga (1.99 mm) galvanized steel.

STANDARD FINISH:
Door and Frame: Gray primer.
Concrete Install Outer Frame: Bituminous coating.

INSULATION:
High temperature insulation in door.

LATCH: : 316 Stainless steel slam latch with removable cover plug, operable from the top side by a removable tool and underside by a spoon handle.

HINGE: Continuous stainless steel piano hinge.

LIFT ASSIST: 316 Stainless steel nitrogen cylinder(s).

Live Load: 150 psf

SIZES:
Minimum 16" x 16"
Maximum 42" x 54"

For a complete list of options visit www.AccessDoorsAndPanels.com



DIMENSIONS AND APPEARANCE

>> CLICK TO VIEW ADDITIONAL DETAILS AND PRICING <<

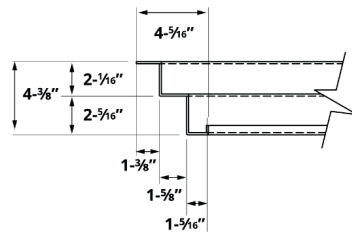
STANDARD SIZES:

MODEL	ORDER SIZE		APPROX. WEIGHT
	WIDTH	LENGTH	
FFD1-2424*	24"	24"	108 lbs.
FFD1-2436*	24"	36"	162 lbs.
FFD1-3030	30"	30"	169 lbs.
FFD1-3036	30"	36"	203 lbs.
FFD1-3048	30"	48"	270 lbs.
FFD1-3630	36"	30"	203 lbs.
FFD1-3636	36"	36"	243 lbs.
FFD1-3648	36"	48"	324 lbs.
FFD1-4242	42"	42"	331 lbs.
FFD1-4254	42"	54"	425 lbs.

ORDER SIZE = FRAME INSIDE DIMENSION

FIRE-RATING INFORMATION

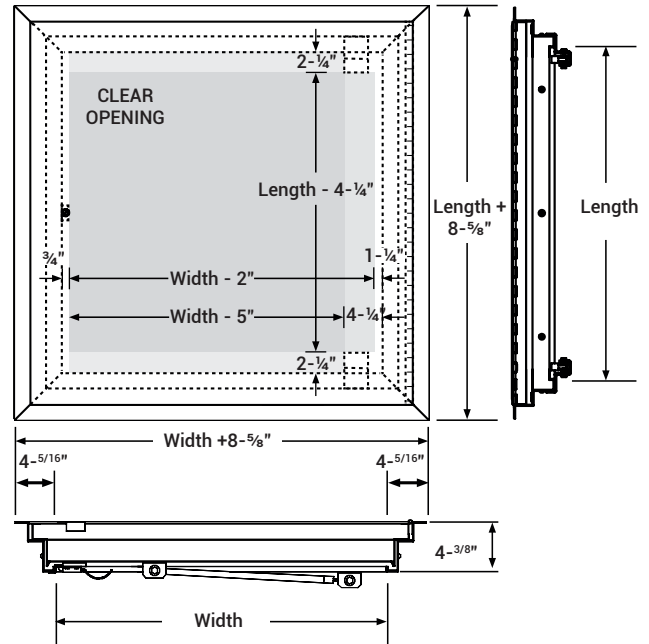
Warnock Hersey Intertek listed and labeled to NFPA-288, ASTM E-119, CAN/ULC-S101, NFPA25, NFPA-252, UL-10B, CAN/ULC-S104



*Doors with a width greater than 24" open 90°. Doors 24" wide and less open 80° to 85°.

Note: Floor Door is not to be exposed to rain or wet environments. Intended for dry location use only.

For detailed specifications see submittal sheet



PROJECT DATA

Custom Sizes Available - Fast!

PROJECT NAME :	QTY	W	H	OPTIONS
ARCHITECT :				
DEALER :				
CONTRACTOR :				
LOCATION :	SPECIAL INSTRUCTIONS :			
DATE :	SUBMITTAL APPROVAL : (signature or stamp)			
TAGGING INSTRUCTIONS :				

Scan or Click



To view Pricing and Additional Product Info.



TELEPHONE:
1-888-457-1275
FAX:
1-888-626-2907



PO BOX 66738 #76520,
SAINT LOUIS, MO
63166-6738
USA

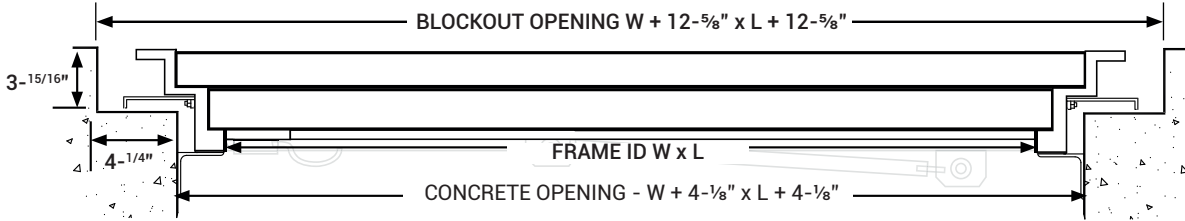


WEBSITE:
www.AccessDoorsAndPanels.com
E-MAIL:
info@AccessDoorsAndPanels.com

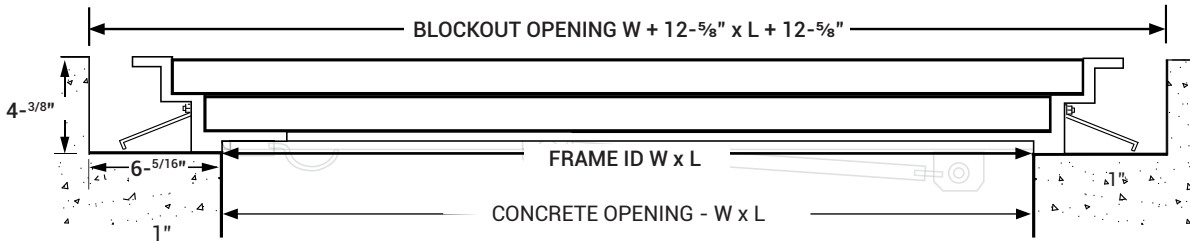
FFD1

1 HOUR FIRE-RATED FLOOR DOOR

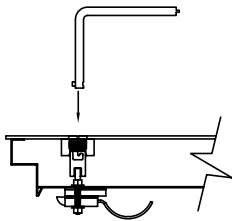
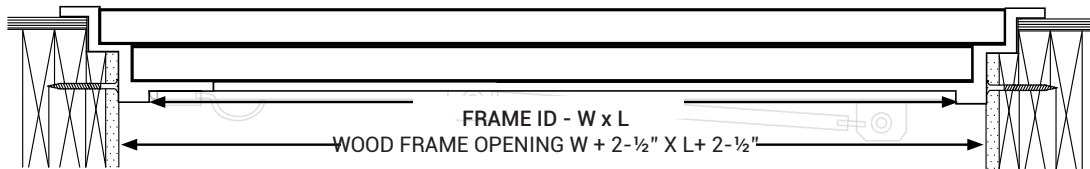
CONCRETE INSTALLATION - RETROFIT #1 (Angle Supports by Others)



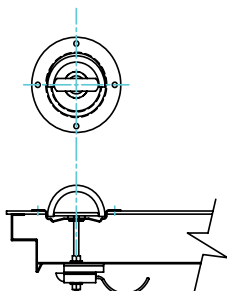
CONCRETE INSTALLATION - RETROFIT #2



OPTIONAL WOOD FRAME INSTALLATION



Standard Latch



Optional Recessed Turn Handle

ADDITIONAL OPTIONS:		
Wood Frame Installation - Supplied with fasteners, drivers and high temperature sealer.	(W)	
Self Closing Mechanism- Fusible link activates at 165°F.	(SC)	
300 lb/ft ² live load.	(3C)	
LATCH AND HANDLE OPTIONS:		
Recessed Stainless Steel Turn Handle Topside**	(T)	
Padlock Hasp Underside.	(P)	
** Not Available if Recessed Aluminum Smooth Door (R) is also chosen		
DOOR PANEL OPTIONS:		
1/4" (6.35 mm) Aluminum Smooth Door	(2AS)	
1/4" (6.35 mm) Aluminum Diamond Door	(2AC)	
1/4" (6.35 mm) Steel Diamond Door	(2SC)	
3/16" (4.78 mm) Steel Smooth Door	(1SS)	
Recessed Aluminum Smooth Door Recessed for 3/16" (4.78 mm) VCT Tile/Carpet	(1ASR)	
Yellow Door Panel w/Lettering "Fire Door Do Not Store Materials/Equipment on Surface"	(Y)	