

SUBMITTAL/TECHNICAL DATA SHEET



DESCRIPTION

The access panel consists of a welded aluminum frame and is available with 1/2" (12.7 mm) or 5/8" (15.9 mm) inlaid drywall and two latches.

Both an outer and an inner frame assembly consists of high grade aluminum which is bonded with a special welding process.

For sizes 12" x 12" (305 mm x 305 mm) and up the access panels are equipped with a safety-system to prevent accidental opening. This safety system must be reattached if the hatch is removed.

A reveal of just 1/16" (1.59 mm) is all that is visible of the access panel that blends into a wall or ceiling.

The concealed snap locks open the access panel when pressure is applied to the spring loaded latch side.

The panel door is equipped with a perimeter seal.

OPTIONS

- Screwdriver operated cam latch
- Screwdriver operated four-square cam latch
- Round Cylinder Lock with Key
- Mortise Cylinder Lock Preparation
- Hex Head Cam Latch
- Pinned Hex Head Cam Latch

ADVANTAGE

- Superior engineering & innovative design
- Fast delivery
- Quick and easy installation
- Solid aluminum frame
- Flush installation in ceilings and walls
- Available in moisture resistant, mildew resistant and cement board

For a complete list of options visit www.AccessDoorsAndPanels.com



SKU: **F2**

**INVISIA HATCH
DRYWALL INLAY**

WITH DETACHABLE HATCH

DIMENSIONS AND APPEARANCE

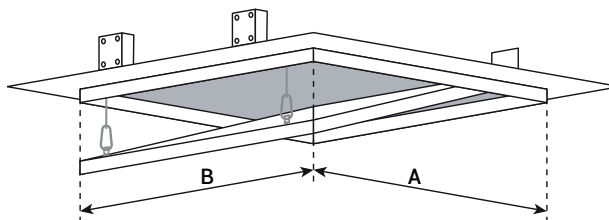
>> CLICK TO VIEW ADDITIONAL DETAILS AND PRICING <<

STANDARD SIZES:

F2 CODE	DIMENSIONS	
	A inch mm	B inch mm
F2-8-8	8" 203	8" 203
F2-12-12	12" 305	12" 305
F2-16-16	16" 406	16" 406
F2-20-20	20" 508	20" 508
F2-24-24	24" 610	24" 610

All standard sizes are available in 1/2" (12.7 mm) or 5/8" (15.9 mm) drywall.

Rough opening is door size + " (9 mm)



CUSTOMIZED SOLUTIONS:

Customized sizes can be produced in every dimension upon request.

Drywall insert with screws on larger sizes than 24" x 24" (610 mm x 610 mm).

For detailed specifications see submittal sheet

PROJECT DATA

Custom Sizes Available - Fast!

PROJECT NAME :	QTY	W	H	OPTIONS
ARCHITECT :				
DEALER :				
CONTRACTOR :				
LOCATION :	SPECIAL INSTRUCTIONS :			
DATE :				
TAGGING INSTRUCTIONS :	SUBMITTAL APPROVAL : (signature or stamp)			

Scan or Click



To view Pricing and Additional Product Info.



TELEPHONE:
1-888-457-1275
FAX:
1-888-626-2907



PO BOX 66738 #76520,
SAINT LOUIS, MO
63166-6738
USA



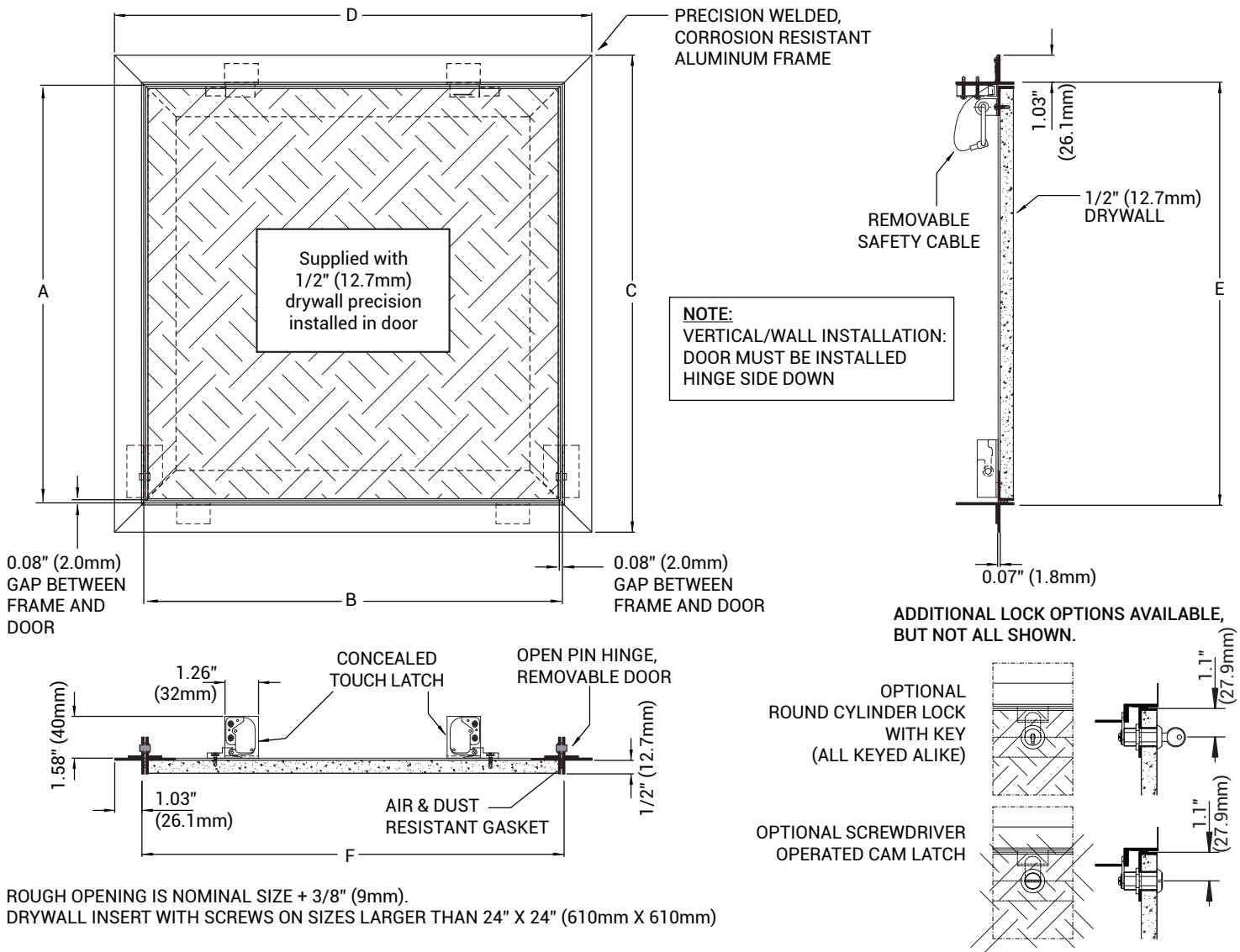
WEBSITE:
www.AccessDoorsAndPanels.com
E-MAIL:
info@accessdoorsandpanels.com



F2

INVISIA HATCH DRYWALL INLAY WITH FULLY DETACHABLE HATCH

NOMINAL DOOR SIZE	A	B	C	D	E	F	LOCK
Inches (mm)							
8 x 8 (203 x 203)	8.00 (203)	8.00 (203)	10.20 (258)	10.20 (258)	8.14 (207)	8.14 (207)	2
12 x 12 (305 x 305)	12.00 (305)	12.00 (305)	14.20 (359)	14.20 (359)	12.14 (308)	12.14 (308)	2
16 x 16 (406 x 406)	16.00 (406)	16.00 (406)	18.20 (461)	18.20 (461)	16.14 (410)	16.14 (410)	2
18 x 18 (457 x 457)	18.00 (457)	18.00 (457)	20.20 (512)	20.20 (512)	22.14 (461)	22.14 (461)	2
20 x 20 (508 x 508)	20.00 (508)	20.00 (508)	22.20 (562)	22.20 (562)	20.14 (512)	20.14 (512)	2
24 x 24 (610 x 610)	24.00 (610)	24.00 (610)	26.20 (664)	26.20 (664)	24.14 (613)	24.14 (613)	2
24 x 36 (610 x 915)	24.00 (610)	36.00 (915)	26.20 (664)	38.20 (969)	24.14 (613)	36.14 (919)	3



ROUGH OPENING IS NOMINAL SIZE + 3/8" (9mm).
 DRYWALL INSERT WITH SCREWS ON SIZES LARGER THAN 24" X 24" (610mm X 610mm)

STANDARD FEATURES:

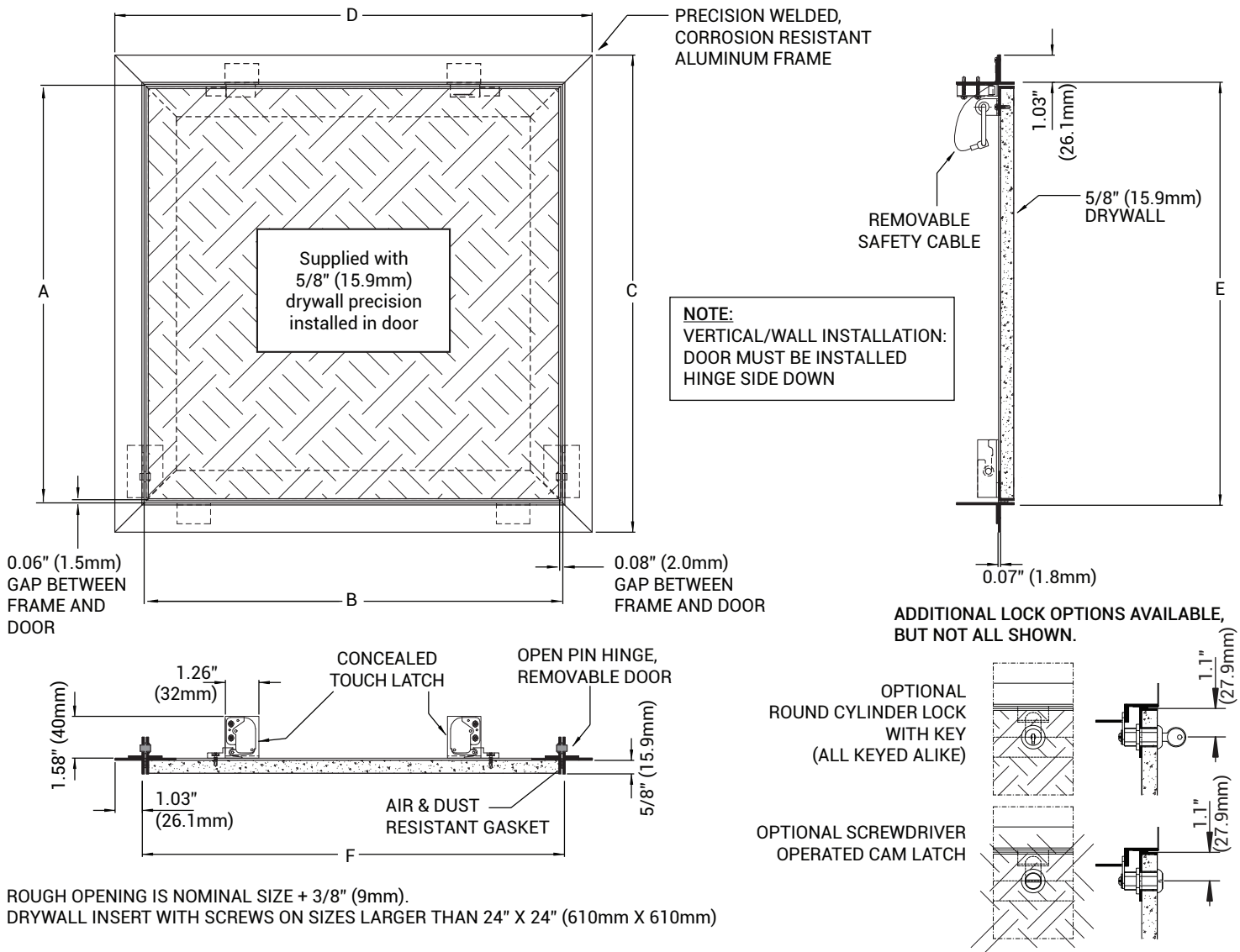
CONCEALED TOUCH LATCH; OPEN HINGE, REMOVABLE DOOR; FITS 5/8" (15.9mm) DRYWALL; FOR NON-RATED WALLS & CEILINGS; ALUMINUM FRAME & DOOR STRUCTURE, WELDED, MILL FINISH; NON-SNAG REMOVABLE SAFETY CABLE



F2

INVISIA HATCH DRYWALL INLAY WITH FULLY DETACHABLE HATCH

NOMINAL DOOR SIZE	A	B	C	D	E	F	LOCK
Inches (mm)							
8 x 8 (203 x 203)	8.00 (203)	8.00 (203)	10.20 (258)	10.20 (258)	8.14 (207)	8.14 (207)	2
12 x 12 (305 x 305)	12.00 (305)	12.00 (305)	14.20 (359)	14.20 (359)	12.14 (308)	12.14 (308)	2
16 x 16 (406 x 406)	16.00 (406)	16.00 (406)	18.20 (461)	18.20 (461)	16.14 (410)	16.14 (410)	2
18 x 18 (457 x 457)	18.00 (457)	18.00 (457)	20.20 (512)	20.20 (512)	22.14 (461)	22.14 (461)	2
20 x 20 (508 x 508)	20.00 (508)	20.00 (508)	22.20 (562)	22.20 (562)	20.14 (512)	20.14 (512)	2
24 x 24 (610 x 610)	24.00 (610)	24.00 (610)	26.20 (664)	26.20 (664)	24.14 (613)	24.14 (613)	2
24 x 36 (610 x 915)	24.00 (610)	36.00 (915)	26.20 (664)	38.20 (969)	24.14 (613)	36.14 (919)	3



ROUGH OPENING IS NOMINAL SIZE + 3/8" (9mm).
 DRYWALL INSERT WITH SCREWS ON SIZES LARGER THAN 24" X 24" (610mm X 610mm)

STANDARD FEATURES:

CONCEALED TOUCH LATCH; OPEN HINGE, REMOVABLE DOOR; SUPPLIED TO FIT 5/8" (15.9MM) DRYWALL;
 OR NON-RATED WALLS & CEILINGS; ALUMINUM FRAME AND DOOR STRUCTURE, WELDED, MILL FINISH; NON-SNAG REMOVABLE SAFETY CABLE