

SUBMITTAL/TECHNICAL DATA SHEET



ADVANTAGES

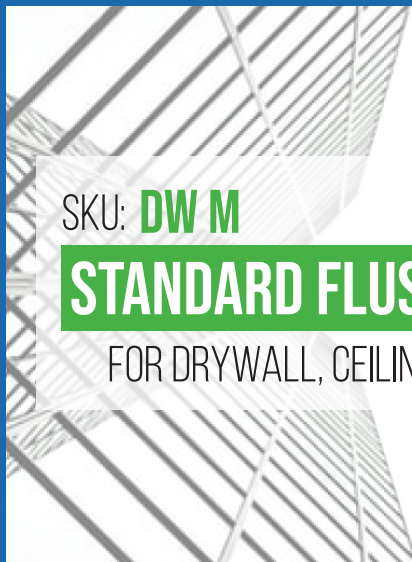
- Flush panel means that door is unobtrusive in appearance.
- Outer frame has special drywall bead configuration so that drywall cement may be applied to cover and conceal the flange.
- Standard sizes fit standard wood stud or steel stud spacing of 12", 16", or 24" on center with no additional bracing.
- Special double-acting concealed spring hinges allow opening to 175 degrees for complete access.
- The Milcor DW Access Door complements drywall construction in a flush wall or ceiling installation.

- Available in brilliant white, stainless steel and galvanized steel. Optional primed colors also include grey powder coated steel, gold sand and jet black.

FEATURES

- 16 GA. C.R.S. Frame
- 16 GA. C.R.S. Door panel
- Concealed spring hinge allowing door to open 175*
- Easy opening screwdriver cam latch
- White powder coated steel
- Rough req. Wall opening = width + 1/2" height +1/2"
- Angle iron cover support used when size > 36" x 36"
- Wall application only when size > 36" x 36"

For a complete list of options visit www.AccessDoorsAndPanels.com



SKU: **DW M**

STANDARD FLUSH DOOR

FOR DRYWALL, CEILING OR WALLS



DIMENSIONS AND APPEARANCE

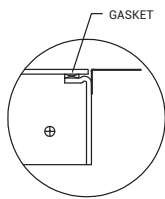
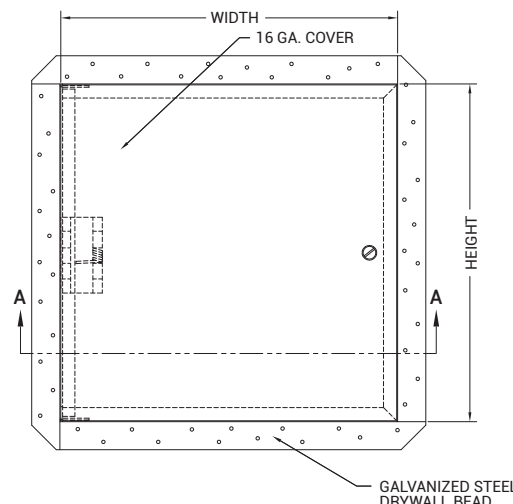
>> CLICK TO VIEW ADDITIONAL DETAILS AND PRICING <<

STANDARD SIZES AND PRODUCT NUMBERS:

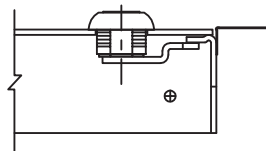
DOOR SIZE W x H	OPENING SIZE	HINGES	CAMS	SHIPPING WEIGHT LBS.
8 x 8	8 1/2" x 8 1/2"	1	1	4
10 x 10	10 1/2" x 10 1/2"	1	1	5
12 x 12	12 1/2" x 12 1/2"	1	1	6
14 x 14	14 1/2" x 14 1/2"	2	1	9
16 x 16	16 1/2" x 16 1/2"	2	1	10
18 x 18	18 1/2" x 18 1/2"	2	1	12
22 x 22	22 1/2" x 22 1/2"	2	4*	17
24 x 24	24 1/2" x 24 1/2"	2	4*	19
24 x 36	24 1/2" x 36 1/2"	3	5*	28

* = One cam Centered at Top and Bottom of Panel, Balance on Side Opposite Hinges

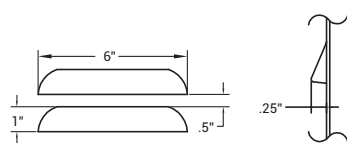
Check the Second Page for more Detailed Information



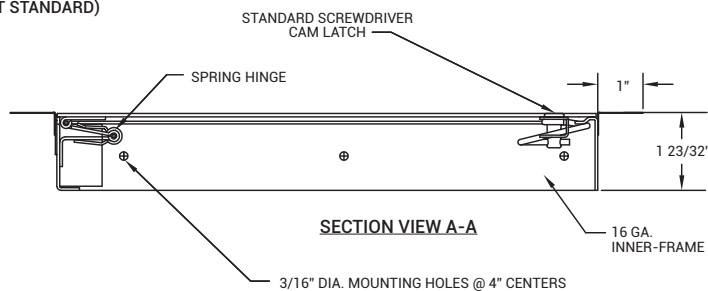
GASKET DETAIL (NOT STANDARD)



CYLINDER LOCK (NOT STANDARD)



LOUVER FRONT and PROFILE DETAIL (NOT STANDARD)



SECTION VIEW A-A

PROJECT DATA

Custom Sizes Available - Fast!

PROJECT NAME :	QTY	W	H	OPTIONS
ARCHITECT :				
DEALER :				
CONTRACTOR :				
LOCATION :	SPECIAL INSTRUCTIONS :			
DATE :	SUBMITTAL APPROVAL : (signature or stamp)			
TAGGING INSTRUCTIONS :				

Scan or Click



To view Pricing and Additional Product Info.

TELEPHONE:
1-888-457-1275
FAX:
1-888-626-2907

PO BOX 66738 #76520,
SAINT LOUIS, MO
63166-6738
USA

WEBSITE:
www.AccessDoorsAndPanels.com
E-MAIL:
info@accessdoorsandpanels.com



DW M

STANDARD FLUSH DOOR FOR DRYWALL, CEILINGS / WALLS

STANDARD SIZES AND PART #'S

DOOR SIZE WxH	NUMBER OF CAM S	NUMBER OF HINGES	PRODUCT PART #'S			
			PAINTED STEEL		STAINLESS STEEL	
			CAM LATCH	1x CYL LOCK	CAM LATCH	1x CYL LOCK
8 x 8	1	1	3203008	3203108		
10 x 10	1	1	3203010	3203020	3203030	3203040
12 x 12	1	1	3203012	3203112		
14 x 14	1	2	3203013	3203024	3203034	3203044
16 x 16	1	2	3203014	3203116		
18 x 18	1	2	3203016	3203117		
22 x 22	4*	2	3203018	3203118	3203139	3203148
24 x 24	4*	2	3203019	3203119		
24 x 36	5*	3	3203036	3203136		

* = One cam Centered at Top and Bottom of Panel, Balance on Side Opposite Hinges

