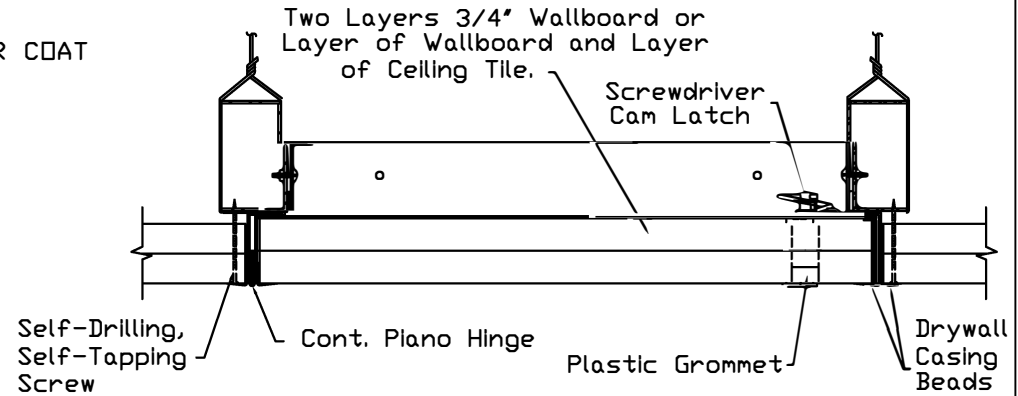


**STANDARD SIZES and PRODUCT NUMBERS**

DOOR SIZE	WALL OPENING	PRODUCT NUMBER	No. OF CAMS	Shipping Weight lbs. each
12 x 12	10-1/2 x 10-1/2	3204-112-9	1	8
12 x 24	10-1/2 x 22-1/2	3204-114-9	2	11
18 x 18	16-1/2 x 16-1/2	3204-118-9	2	14
24 x 24	22-1/2 x 22-1/2	3204-124-9	2	20
24 x 36	22-1/2 x 34-1/2	3204-136-9	3	28

NOTE: GRAY POWDER COAT



**Installation Detail**

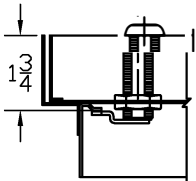
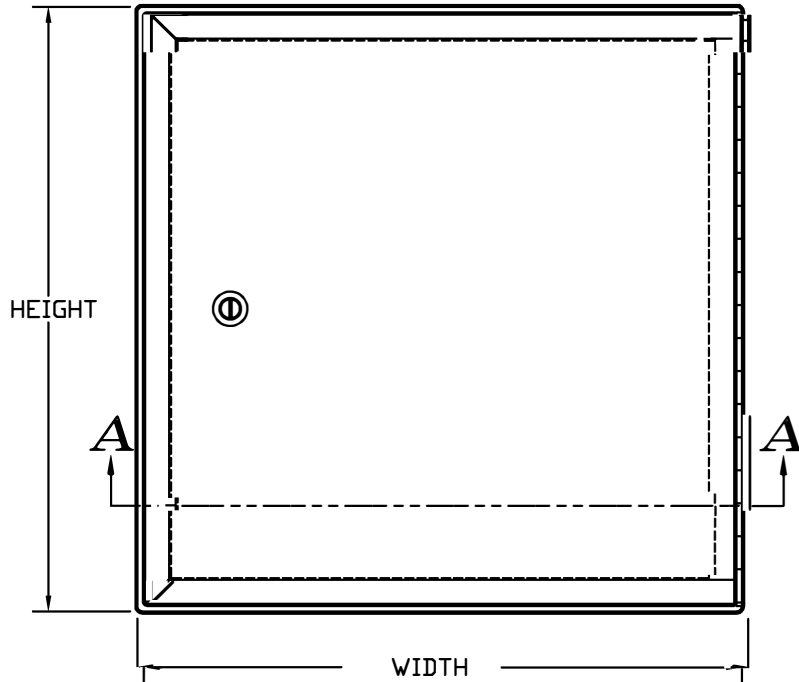
VERIFICATION AND APPROVAL OF GENERAL ARRANGEMENT AND OVERALL DIMENSIONS OF THIS DOCUMENT ARE REQUIRED BEFORE THE ORDER IS ENTERED FOR MANUFACTURING.

APPROVAL SIGNATURE \_\_\_\_\_

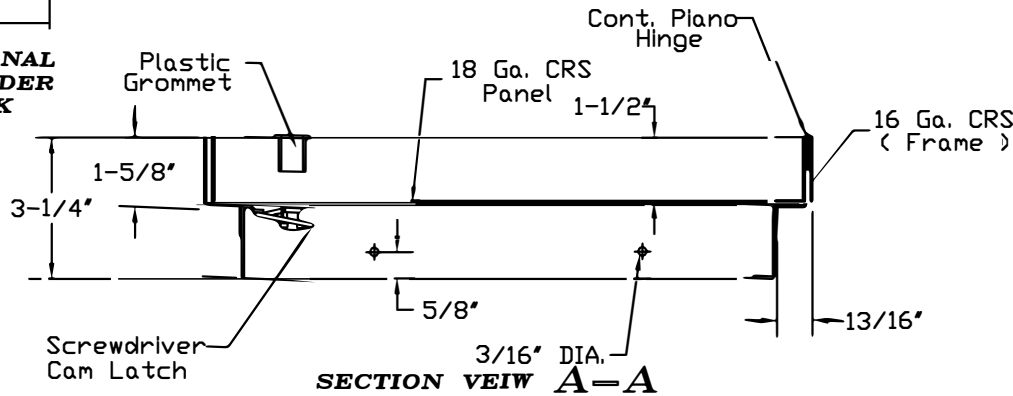
TITLE HELD \_\_\_\_\_

DATE OF APPROVAL \_\_\_\_\_

ORDER WILL NOT BE RELEASED FOR FABRICATION UNTIL SIGNED COPY IS RECEIVED.



OPTIONAL CYLINDER LOCK



**AccessDoorsAndPanels**

Address: PO Box 66738 #76520,  
Saint Louis, MO 63166-6738

Phone: 1-800-609-2917 Fax: 1-888-626-2907  
Website: www.AccessDoorsAndPanels.com  
Email: info@AccessDoorsAndPanels.com

**RECESSED STEEL DOOR for SUSPENDED CEILING**

**MATERIAL SCHEDULE**

PART NO.	SIZE	COVER	FRAME
		18 GA.	16 GA.
DATE	09/14/2015	DRAWN JM	
REV		JOB NO.	
		SHEET 1 of 1	