

AT Series

MEMBER OF
MORRIS GROUP
INTERNATIONAL*



Acoustical Tile Access Doors

Doors are designed for use with acoustical tile or gypsum board walls and ceilings. The door is engineered to install flush, virtually concealed. Door is recessed 5/8" to accept acoustical tile or gypsum board.

Door is 16 gage and **frame** is 12 gage, galvanized steel with a white prime coat finish.

Concealed Hinge operates completely out of sight so that only the metal thickness of the door and frame is visible.

Latch is screwdriver operated.

Guide Specification

Provide Elmdor® AT Series, Acoustical Tile Access Door (specify model number and options). Access door shall be fabricated from 16 gage and frame from 12 gage, galvanized steel with a white prime coat finish. Door shall be recessed 5/8" to accept acoustical tile or gypsum board. Hinge shall be concealed type. Latch shall be screwdriver operated.



Member of U.S. Green
Building Council

AT

Revised: 10/25/16



MODEL NUMBER AND OPTIONS SELECTION
BASE MODEL NUMBER
☐ AT Acoustical Tile Access Door

Suffix Options

- ☐ -AKL Allen Key Latch
- ☐ -GB Galvanized Drywall Bead
- ☐ -CL Cylinder Lock (one per door)
- ☐ -CLD Cylinder Lock with Dust Shutter (one per door)
- ☐ -SS Stainless Steel Construction (Type 304 No. 4 Satin Finish)

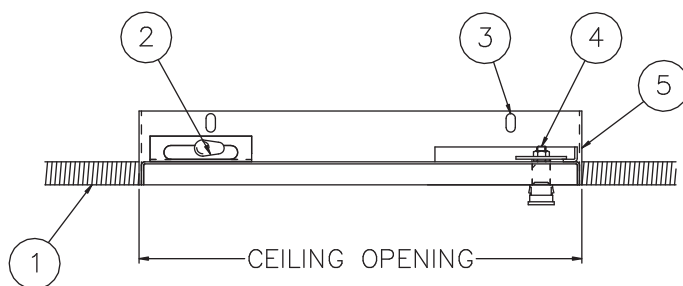
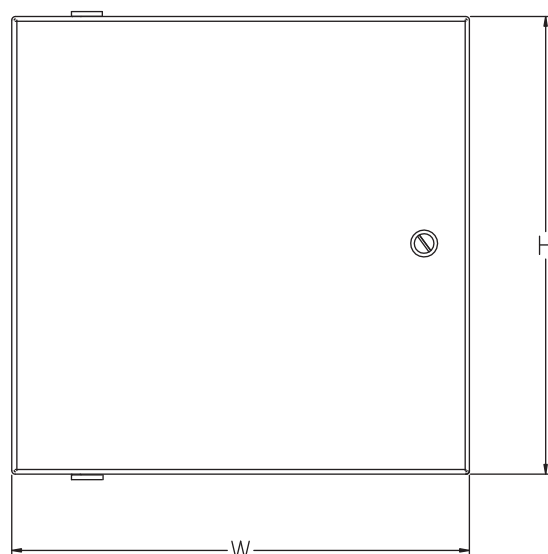
STANDARD AVAILABLE SIZES

Special sizes available upon request.

NOMINAL DOOR SIZE (W X H)	CEILING OPENING (minimum required)	LATCHES	WEIGHT
AT 8" x 8"	8-1/8" x 8-1/8"	1	4 lbs.
AT 12" x 12"	12-1/8" x 12-1/8"	1	5.5 lbs.
AT 12" x 24"	12-1/8" x 24-1/8"	2	9.5 lbs.
AT 16" x 16"	16-1/8" x 16-1/8"	2	8.5 lbs.
AT 18" x 18"	18-1/8" x 18-1/8"	2	10 lbs.
AT 24" x 24"	24-1/8" x 24-1/8"	2	16 lbs.
AT 24" x 36"	24-1/8" x 36-1/8"	3	24.5 lbs.

NOTES:

1. TILE, BY OTHERS
2. CONCEALED HINGE
3. MOUNTING HOLES
4. SCREWDRIVER OPERATED LATCH
5. FRAME


SIDE VIEW

FRONT VIEW
SELECTION SUMMARY & APPROVAL FOR MANUFACTURING

Model Number & Options _____ Quantity _____
 Company _____ Date _____
 Contact _____ Title _____
 Approval for Manufacturing/Signature _____

AT

Revised: 10/25/16