

ACF-2064

SPECIALTY DOORS Steel Flush Acoustical Access Door

Highest STC & OITC Rating in the INDUSTRY

Application

- This flush access door is ideal for use on Acoustical walls where maintaining STC Rating (Sound Transmission Class) and OITC Rating (Outdoor-Indoor Transmission Class) is required

Product Features

- Zinc coated steel provides superior corrosion resistance
- Type 304 Stainless steel with #4 satin polish also available
- Tested and evaluated to ASTM: E90(09), ASTM: E413(16), ASTM: E1332(16) and certified to STC Rating 64 and OITC Rating 54

ACF-2064 Door Specifications:

Material: 18 Gauge Satin Coat Steel

Door: 18 Gauge, encapsulated design with 2" thick acoustical mineral liner and 0.11" thick mineral filled vinyl barrier

Frame: 18 Gauge, press bent for strength and rigidity, with 1" wide trim flanges and 1" thick acoustical mineral liner

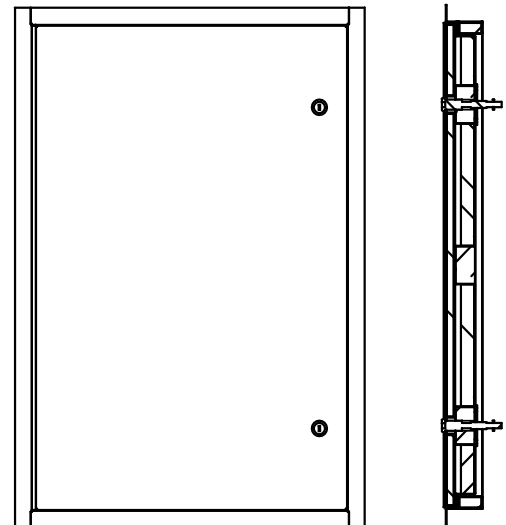
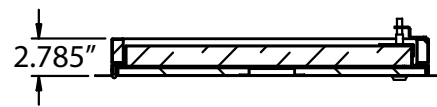
Gasket: Silicone perimeter seal gasket

Hinge: Continuous exposed stainless steel piano hinge

Standard Lock: Screw driver operated Compression Latch

Acoustic Rating: This door has been tested and evaluated to ASTM: E90(09), ASTM: E413(16), ASTM: E1332(16) and certified to STC Rating 64 and OITC Rating 54.

Finish: 5 stage iron phosphate preparation with prime coat of white baked-on enamel



ACF-2064 STANDARD SIZES

Nominal Door Size W&H		Weight per Door		
Inches	mm	Latches	lbs.	kg.
12 x 12	300 x 300	1	14.3	6.5
18 x 18	450 x 450	1	26.5	12
24 x 24	610 x 610	1	44.0	20
24 x 36	610 x 914	2	64.0	29



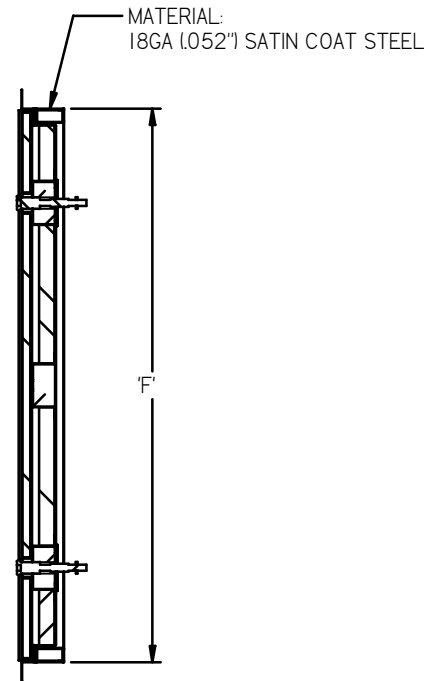
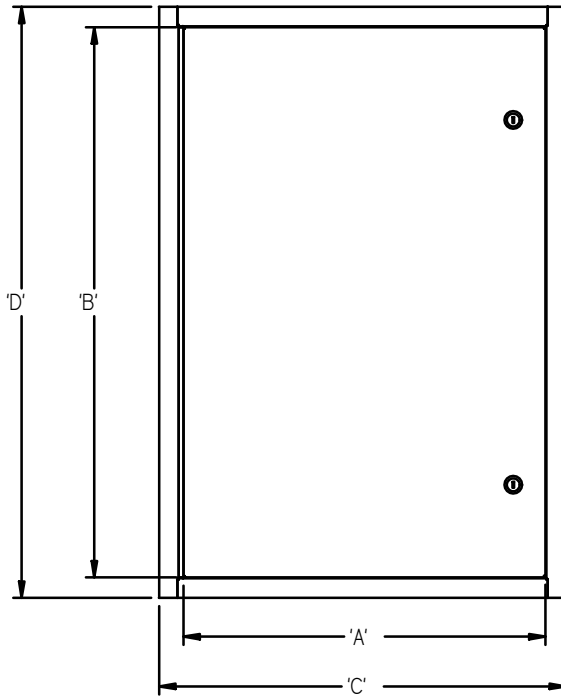
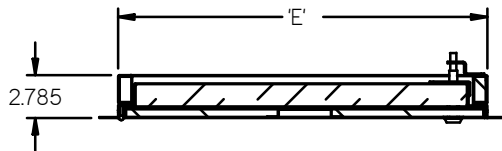
www.accessdoorsandpanels.com
 Phone: 1-800-609-2917
 info@accessdoorsandpanels.com
 P.O Box 66738 #76520 Saint Louis

ACF-2064

STEEL FLUSH ACOUSTICAL ACCESS DOOR

QTY.	NOMINAL SIZE	A	B	C	D	E	F	LOCK
	12 X 12 (305 X 305)	11.57 (294)	11.82 (300)	14.48 (368)	14.48 (368)	12.04 (306)	12.04 (306)	1
	18 X 18 (457 X 457)	17.57 (446)	17.82 (453)	20.48 (520)	20.48 (520)	18.04 (458)	18.04 (458)	1
	24 X 24 (610 X 610)	23.57 (599)	23.82 (605)	26.48 (673)	26.48 (673)	24.04 (611)	24.04 (611)	1
	24 X 36 (610 X 914)	23.57 (599)	35.82 (910)	26.48 (673)	38.48 (977)	24.04 (611)	36.04 (915)	2

ACOUSTIC RATING:
 THIS DOOR HAS BEEN TESTED AND EVALUATED TO ASTM: E90(09),
 ASTM: E413(16), ASTM: E1332(16) AND CERTIFIED TO STC RATING 64
 AND OITC RATING 54



STANDARD FEATURES: SLOTTED COMPRESSION LATCH

OPTIONS:

MATERIAL: STAINLESS STEEL 304 GRADE FINISH: #4 SATIN BRUSH

LOCK OPTIONS:

- HEX 
 HEX WITH SECURITY PIN 
 SQUARE 
 TRIANGLE 

JOB NAME:

APPROVED BY:

CUSTOMER:

DATE: