

SUBMITTAL/TECHNICAL DATA SHEET



DESCRIPTION

The class-leading Howe Green 7500 Series Medium-Duty Floor Access Covers are suitable for all use with all types of hard floor finishes to enable permanent, safe access to services concealed underneath.

FEATURES

- Made to your specification between stated maximum and minimum sizes, with no time or cost constraint.
- Quick and easy to install ensuring minimum disruption.
- Provides easy access to underfloor services using lifting keys.
- Any configuration of ducts and branches can be created to provide a tailor-made floor access solution for your application.
- Fire rated to BS 476 – Part 22 for both aluminium and stainless steel covers. Fire rated for 2 hours on integrity, and up to 1 hour on insulation depending on the floor access cover fill specification.
- Double sealed option provides the highest levels of hygiene and security.

SPECIFICATION

SUITABILITY: Interior and exterior solid floors.

LOADING: Up to 5 tonne pneumatic tyre wheel load.

WEIGHT: 155 kg/m²

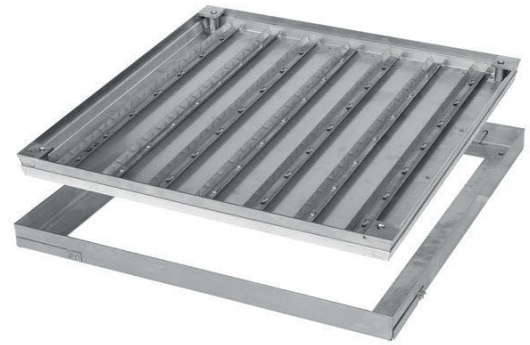
FIRE RATING: BS 476 – Part 22 for integrity and insulation.

SEAL: Optional Double Seal / Top Edge Seal.

SKU: **7500**

MEDIUM-DUTY FLOOR ACCESS COVERS

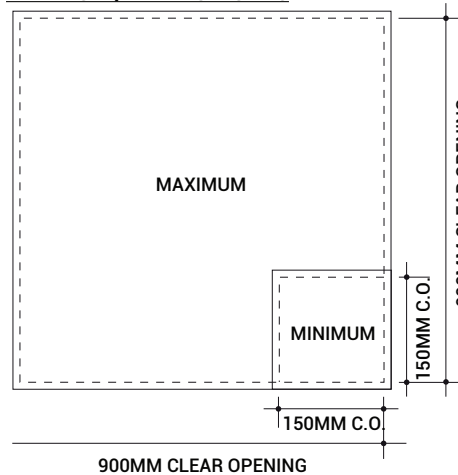
FOR HARD FINISHES



DIMENSIONS AND APPEARANCE

>> CLICK TO VIEW ADDITIONAL DETAILS AND PRICING <<

MAXIMUM / MINIMUM SIZES



TYPICAL FLOOR FINISHES:

All types of hard floor finish – ceramic tiles, marble, terrazzo, concrete, resin, wood or parquet floors.

PERFORMANCE:

Medium-duty, suitable for up to 5 tonne pneumatic tyre wheel load – cars and light delivery vehicles.

FIRE RATING:

The 7500 Series is tested and fire rated to BS 476 – Part 22 for 2 hours on integrity in the case of a fire. This specification is for the use of the cover in a dead load environment only. If any permanent loads are applied this will invalidate the fire rating.

SIZE:

Overall frame size = clear opening + 120 mm e.g. 600 x 900 mm

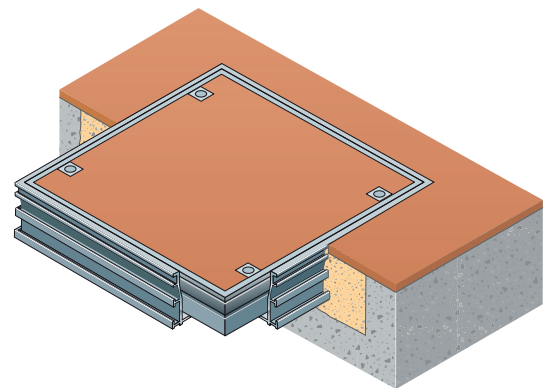
clear opening = 720 x 1020 mm overall frame. Subject to correct infill/installation (see separate guide). See also general notes on cover.

WEIGHT:

A 7500 series cover when filled with concrete weighs approx. 155 kg/m².

See also general notes on cover.

See Submittal page for more detailed information



PROJECT DATA

Custom Sizes Available - Fast!

PROJECT NAME :	QTY	W	H	OPTIONS
ARCHITECT :				
DEALER :				
CONTRACTOR :				
LOCATION :	SPECIAL INSTRUCTIONS :			
DATE :	SUBMITTAL APPROVAL : (signature or stamp)			
TAGGING INSTRUCTIONS :				

Scan  or 



To view Pricing and Additional Product Info.



TELEPHONE:
1-888-457-1275
FAX:
1-888-626-2907



PO BOX 66738 #76520,
SAINT LOUIS, MO
63166-6738
USA

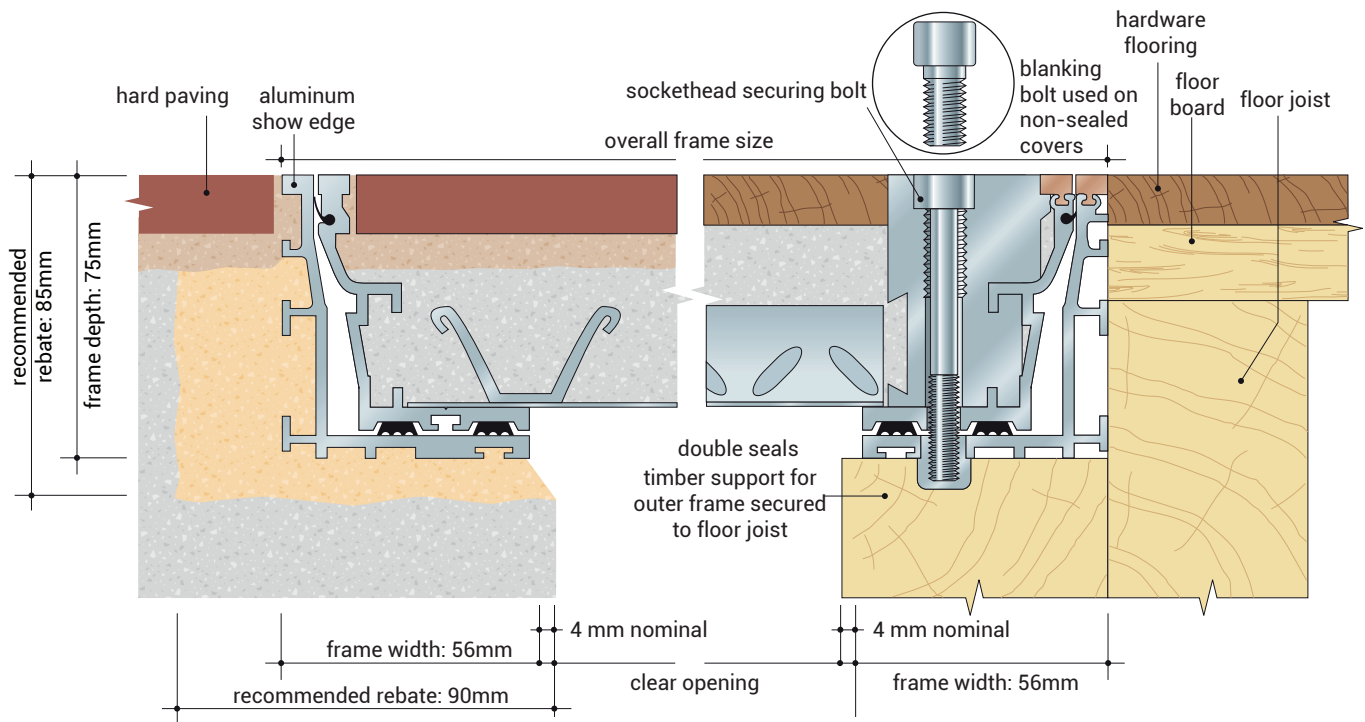


WEBSITE:
www.AccessDoorsAndPanels.com
E-MAIL:
info@accessdoorsandpanels.com



7500

ALUMINIUM SINGLE COVER FLOOR ACCESS COVERS



CROSS SECTION SHOWING CONCRETE AND TIMBER SUB-FLOORS (SCALE 1:2)

FEATURES:

- Covers can be fitted quickly and unobtrusively into all types of hard floor finish: ceramic tiles, marble, terrazzo, resin or parquet.
- Unique patented cover sections are tapered for easy removal, and frame sections give a good key to bedding mortar. Covers are precision-made to avoid distortion.
- Top edge seal on aluminium covers helps prevent dirt, grout or grinding waste penetrating joint between cover and frame. Double seals are available.
- Lifting blocks are anchored to the inner frame. Stainless steel securing bolts are stileto heel proof.
- Optional brass, stainless steel or coloured high impact pvc show edge on aluminium 7500 series is continuously secured; there are no fasteners to rust or break.
- Quality control to BS EN ISO 9001.

GENERAL NOTES ON 1050 SERIES FLOOR ACCESS COVERS:

Size – All covers are made to measure using the Howe Green patented system. This allows the manufacture of any size between the stated maximum and minimum dimensions. Sizes that may be thought 'nonstandard' can therefore be obtained without delay and without cost surcharge. The versatile nature of the Howe Green system allows any configuration of ducts and branches to be created.

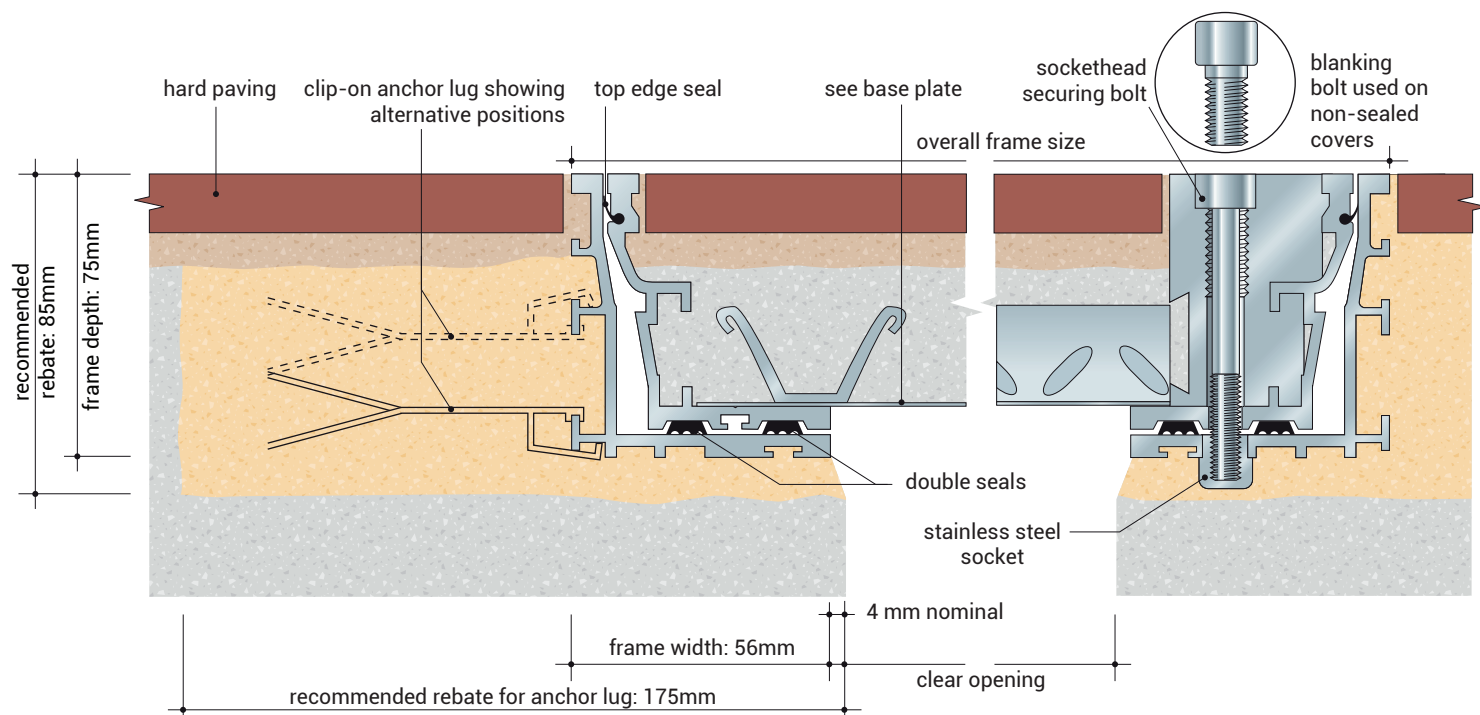
Weight – The weight of the access cover should be taken into account where ease of handling is an important consideration. In all cases reference should be made to the Manual Handling Operations Regulations 1992, which implement European Directive 90/269/EEC. If loads are excessive, consideration should be given to the use of hydraulic lifters, or our HSE 75 range.

Where large covers are necessary, over pits containing plant etc., the main covers can be fitted with small inset covers to allow easy access for routine maintenance. The main covers need then only be removed for major overhauls or plant replacement.



7500

ALUMINIUM DUCT COVER FLOOR ACCESS COVERS



CROSS SECTION SHOWING ANCHOR LUGS AND LOCKING/LIFTING DETAIL (SCALE 1:2)

TYPICAL FLOOR FINISHES:

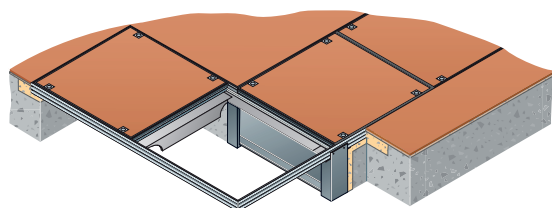
Ceramic tiles, marble, terrazzo, concrete, resin, wood and all hard floors.

PERFORMANCE:

Up to 3 tonne pneumatic tyre wheel load (cars and light delivery vehicles).

OPTIONS:

Every cover is available with a choice of aluminium or brass show edge, and matching lifting blocks, or Colouredge high impact pvc edges with aluminium lifting blocks (see website). Double seal. 2 hour fire rating to BS 476: Part 20: 1987 available; ask for indicative test report.



SIZE:

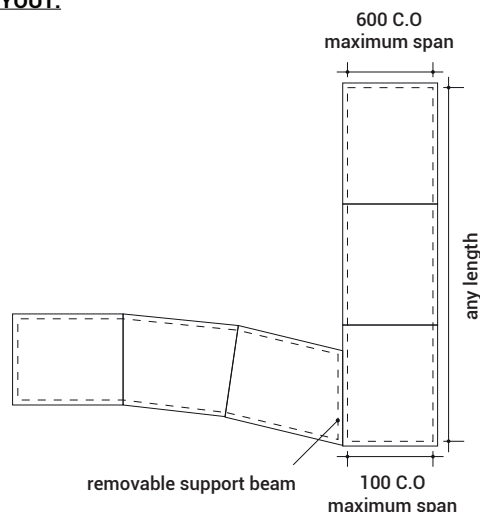
Overall frame size = clear opening + 120 mm e.g. 550 mm clear opening = 670 mm overall frame width. Subject to correct infill/installation (see separate guide).

See also general notes on cover.

WEIGHT:

A 7500 series cover when filled with concrete weighs approx. 155 kg/m². See also general notes on cover.

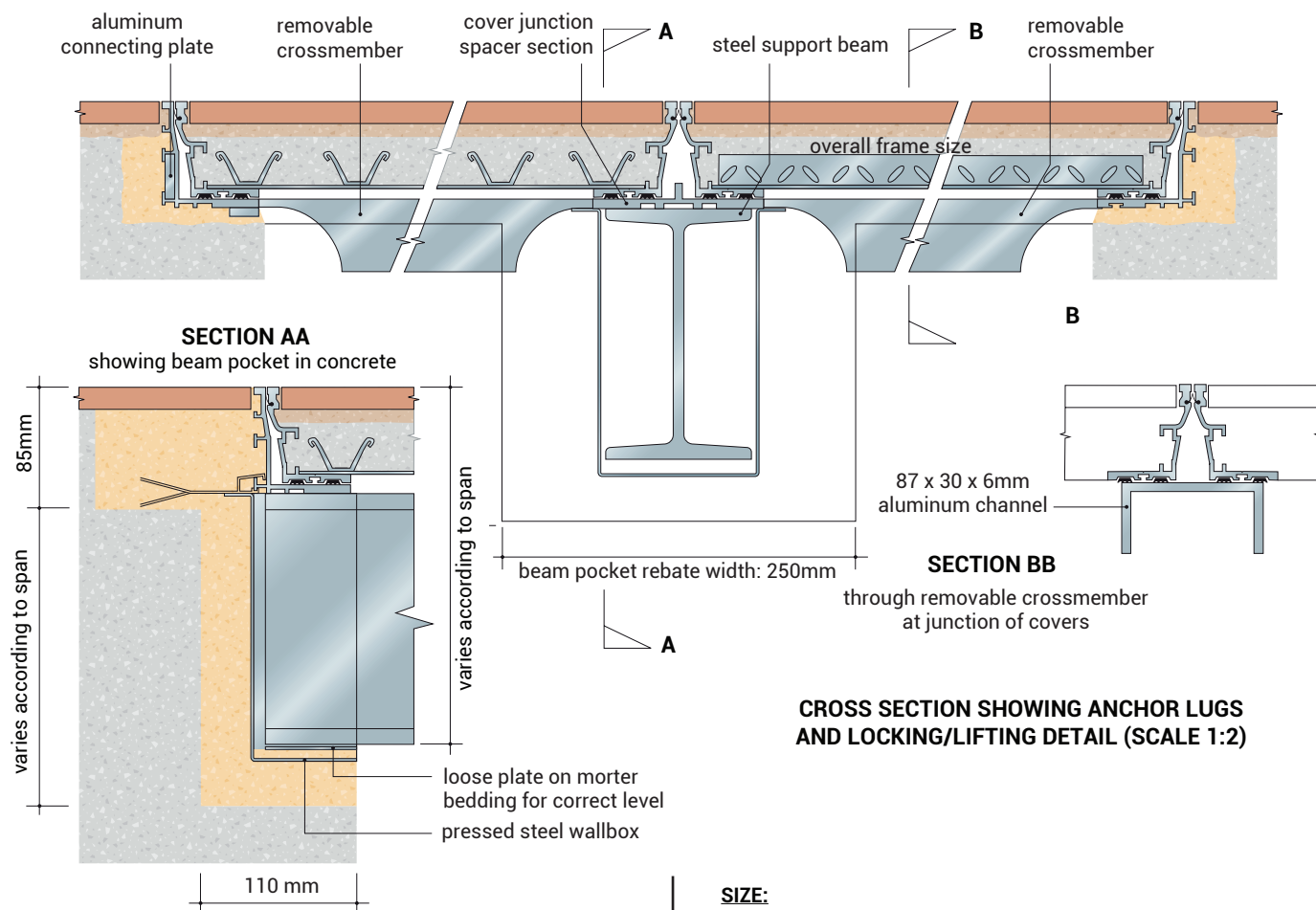
TYPICAL LAYOUT:





7500

ALUMINIUM MULTIPART COVER FLOOR ACCESS COVERS



TYPICAL FLOOR FINISHES:

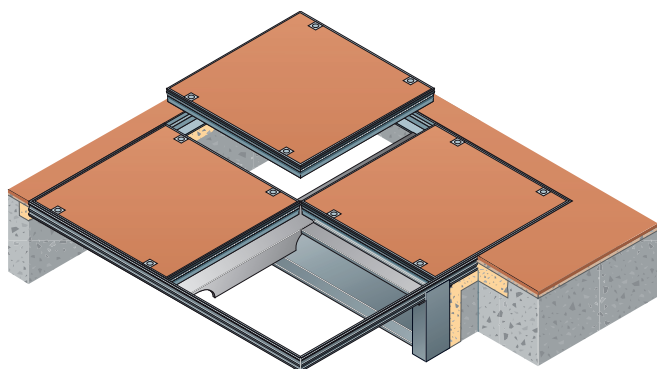
Ceramic tiles, marble, terrazzo, concrete, resin, wood and all hard floors.

PERFORMANCE:

Up to 3 tonne pneumatic tyre wheel load (cars and light delivery vehicles)

OPTIONS:

Every cover is available with a choice of aluminium or brass show edge, and matching lifting blocks, or Colouredge high impact pvc edges with aluminium lifting blocks. Double seal. 2 hour fire rating to BS 476: Part 20: 1987 available; ask for indicative test report.



SIZE:

Because of the potentially complex design of multipart layouts Howe Green recommend early consultation with their Technical Department to achieve the optimum and most economical layout for the given installation.

See also general notes on second page.

WEIGHT:

A 7500 series cover when filled with concrete weighs approx. 155 kg/m²

See also general notes on cover.

TYPICAL LAYOUT:

