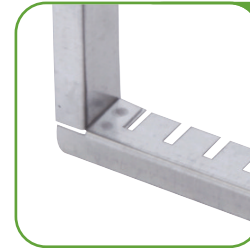
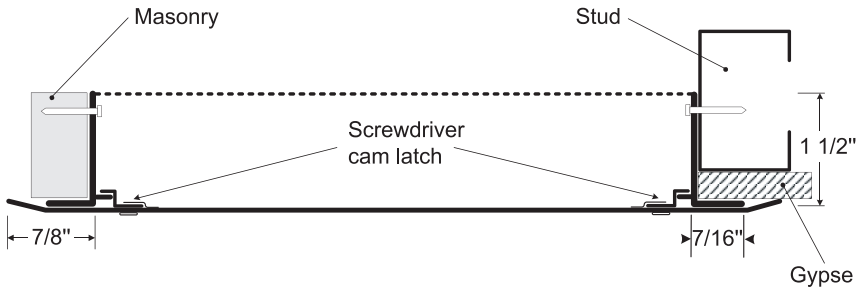


Click here to Online Product Page and Pricing

## REMOVABLE ACCESS DOOR WITH HIDDEN FLANGE

# RMD

### INSTALLATION



### OPTION

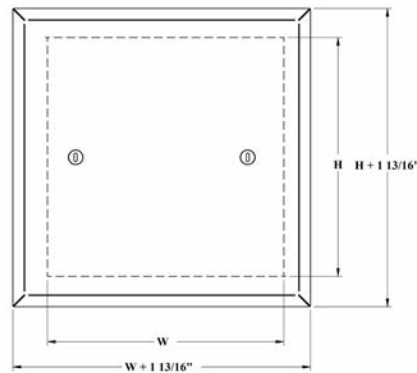
**KNOCK-OVER TABS**  
Fastening is made easy by simply bending the tabs behind the sheetrock. No need for studs!

### DIMENSION AND APPEARANCE

LEED ready: This product contributes to LEED® credits.

DOOR SIZE - W x H INCHES (MM)	NUMBER OF LOCKS	WEIGHT LBS KG
8 x 8 (203 x 203)	2	3 1.4
12 x 12 (304 x 304)	2	6 2.7
16 x 16 (406 x 406)	2	9 4.1
24 x 24 (609 x 609)	4	17 7.7
Rough wall opening is door size + 1/4" or + 6mm		

**Your odd sizes:  
Made in 5 days**



### DESCRIPTION AND MATERIAL SPECIFICATION

**Material:** 16 gauge cold rolled steel  
**Lock / latch:** screwdriver operated cam latch  
**Finish:** DuPont® high quality grey powder coat  
**Packaging:** individually wrapped, 1 per box

**POPULAR OPTIONS** For complete list of options go to: [www.AccessDoorsAndPanels.com](http://www.AccessDoorsAndPanels.com)

**Material :** stainless steel door 304 #4 (brushed finish)  
**Lock / latch:** hex head cam latch  
**Installation:** frame with notched knock-over tabs  
**Finish :** DuPont® high quality white powder coat



### PROJECT DATA

PROJECT NAME:	QTY	W	H	OPTIONS
ARCHITECT:				
DEALER:				
CONTRACTOR:				
LOCATION:	SPECIAL INSTRUCTIONS:			
DATE:				
TAGGING INSTRUCTIONS:	SUBMITTAL APPROVAL: (signature or stamp)			

**Email:** [info@accessdoorsandpanels.com](mailto:info@accessdoorsandpanels.com)  
**Website:** [www.accessdoorsandpanels.com](http://www.accessdoorsandpanels.com)

**Phone:** 1-800-609-2917  
**Fax:** 1-888-626-2907

**Address:**  
 P.O Box 66738 #76520 Saint Louis